



Hayfield Brae Methven

The Addison

219.90 sq.m (2367 sq.ft)

The floor and development site plans and the dimensions shown in this brochure depict typical layouts of these house types and are taken from architect's drawings generally based on longest dimensions of the room. The finished sizes may vary slightly. The illustrations are for information only and show a typical finish of the particular house types. External materials and landscaping may differ from the illustration, please contact our sales team for full details. These particulars do not form part of a contract or warranty.

Hayfield Brae Methven

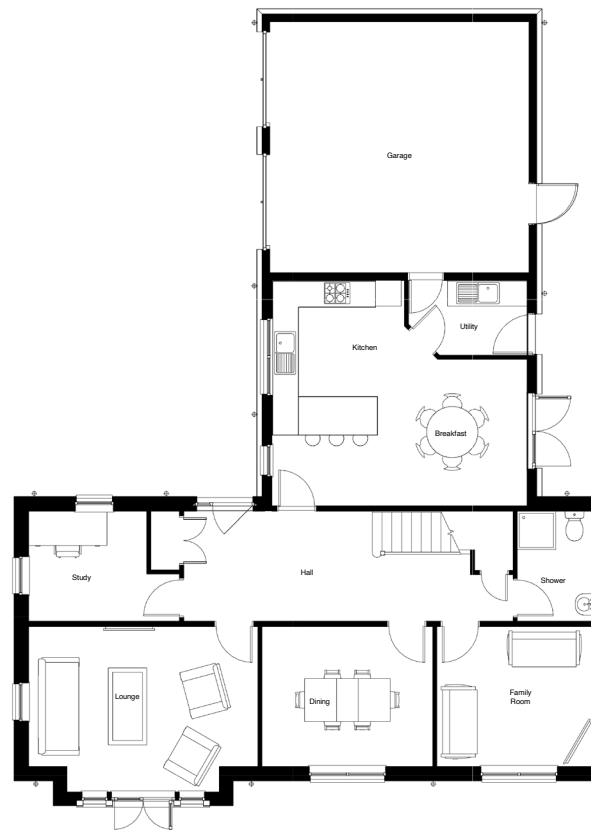
The Addison

219.90 sq.m (2367 sq.ft)

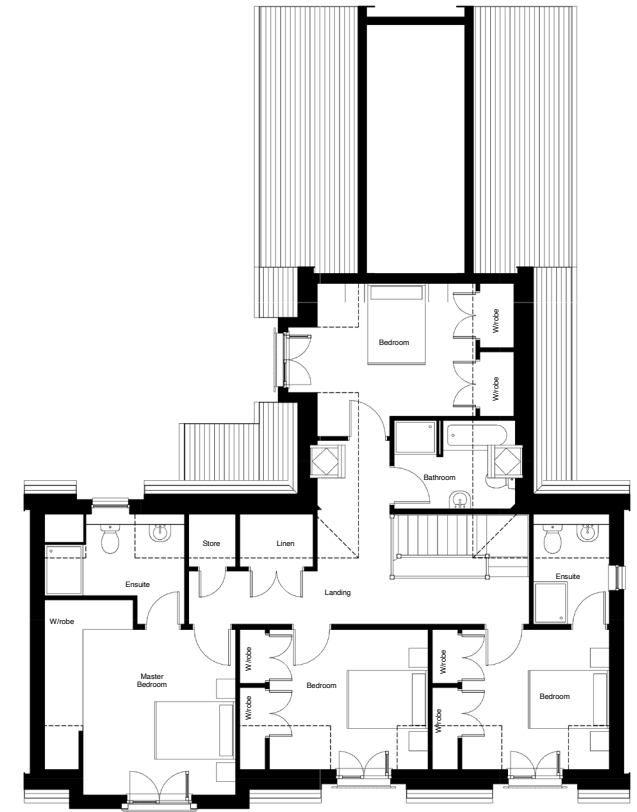


Approximate Room Sizes

Lounge	5.4m x 3.3m	17' 9" x 10' 10"
Kitchen	3.2m x 5.3m	10' 6" x 17' 5"
Breakfast	2.8m x 3.4m	9' 2" x 11' 1"
Dining	4m x 3.3m	13' 1" x 10' 10"
Family Room	3.7m x 3.3m	12' 1" x 10' 10"
Study	2.8m x 2.6m	9' 2" x 8' 9"
Master Bedroom	3.6m x 3.9m	11' 10" x 12' 9"
Bedroom 2	3.7m x 3.3m	12' 1" x 10' 10"
Bedroom 3	3.5m x 3.3m	11' 6" x 10' 10"
Bedroom 4	3.7m x 3.6m	12' 11" x 11' 10"
Utility	2.8m x 1.8m	9' 2" x 5' 11"



GROUND FLOOR



FIRST FLOOR