

Kirktown Brae Stonehaven

Calderwood

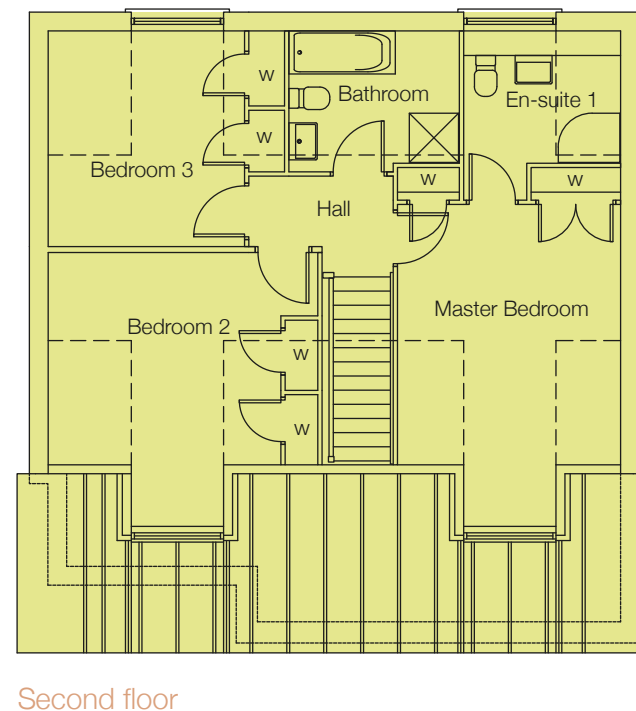
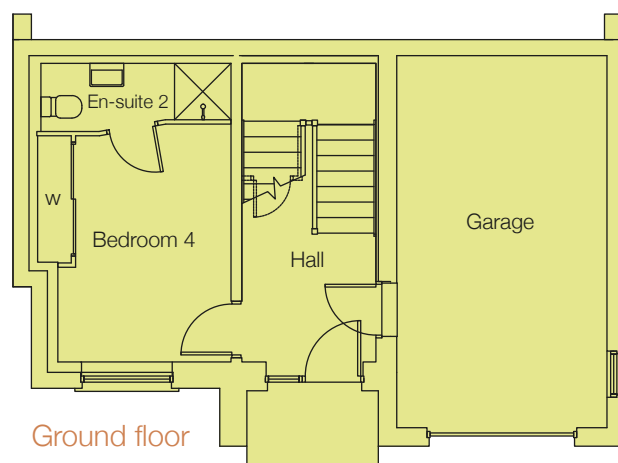
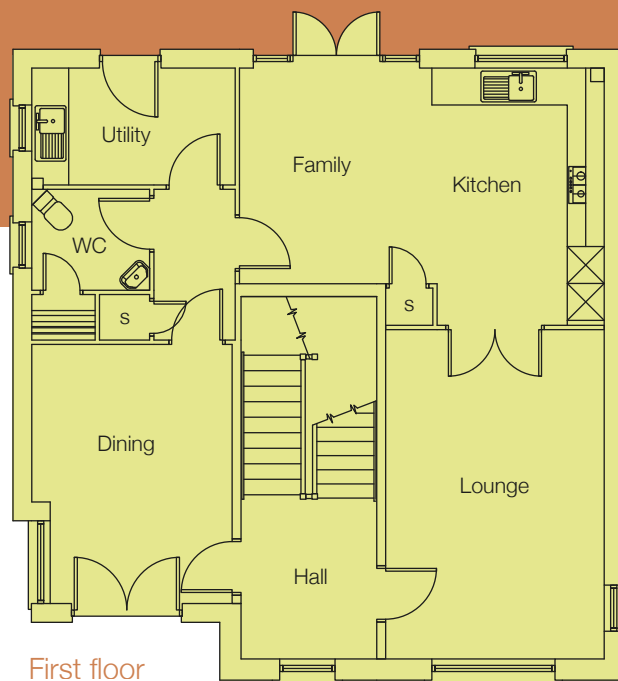
180.66 sq.m (1944 sq.ft)



Kirktown Brae Stonehaven

Calderwood

180.66 sq.m (1944 sq.ft)



Approximate Room Sizes

Lounge	3.55 x 5.35m	11'8" x 17'7"
Kitchen/Family	5.93 x 3.51m	19'5" x 11'6"
Dining	3.26 x 4.21m	10'8" x 13'10"
Utility Room	3.30 x 1.90m	10'10" x 6'3"
Master Bed	3.63 x 4.23m	11'11" x 13'11"
Bedroom 2	3.78 x 3.45m	12'5" x 11'4"
Bedroom 3	3.19 x 3.51m	10'6" x 11'6"
Bedroom 4	2.81 x 3.86m	9'3" x 12'8"

The floor, development site plans and the dimensions shown in this brochure depict typical layouts of these house types and are taken from architects drawings generally based on longest dimensions of the room. The finished sizes may vary slightly. The illustrations are for information only and show a typical finish of the particular house types. External materials and landscaping may differ from the illustration, please contact our sales teams for full details. These particulars do not form part of a contract or warranty.